



CRM@PRISMROUTE.COM

+1 844 6000 548

WWW.PRISMROUTE.COM



Who We Are?

At PrismRoute, we are a team of passionate experts who came together with a single mission: to provide all the essential services your business needs under one umbrella. Our goal is to simplify your operations and make everything easy for you.

We are specialists in different fields, combining our expertise to create a seamless experience for you. Whether it's communication, security, or IT infrastructure, we ensure every aspect works harmoniously.

Why PrismRoute?

The Prism Meaning:

Like a prism breaking light into its vibrant spectrum of colors, our company transforms complex needs into manageable, tailored solutions. Though we offer seven services, they come together as one unified, cohesive system, keeping everything under control for your peace of



Our Colors: Blue, Purple, and the Prism

Our logo is more than just a design—it's a representation of who we are and what we stand for.

Blue: Symbolizing trust, innovation, and reliability, blue reflects the steady foundation of our services. It embodies our commitment to providing solutions you can depend on, much like the calm confidence of a clear sky or the vast potential of the ocean.

Purple: Representing creativity, ambition, and excellence, purple signifies our passion for delivering tailored solutions that meet your unique needs. It's the color of imagination and high standards, driving us to push boundaries and think beyond the ordinary.

The Prism: The prism in our logo symbolizes clarity and focus. Just as a prism transforms a single beam of light into a vibrant spectrum, we take complex challenges and turn them into unified, actionable solutions. Each color of the spectrum represents one of our seven services, all seamlessly integrated to work together under one roof.

Together, these colors and the prism encapsulate our mission to provide innovation, reliability, and harmony in everything we do.



Our Services

1- Business Phone Systems:

Modern communication solutions with advanced features like call routing, queuing, and global accessibility.

2- Network Design and Implementation:

Secure, high-performance networks tailored to your business needs.

3-Access Control Systems:

Advanced entry management for a safe and efficient workplace.

4-Camera and Surveillance Systems:

Comprehensive security solutions with remote monitoring and high-definition footage.

5-Microsoft 365 and Remote Work Solutions:

Cloud-based tools and RDS for seamless productivity from anywhere.

6-Customized Servers and Cloud Services:

Scalable IT infrastructure with on-premise and cloud options for your business.

7-Audio-Video Over IP Solutions:

Integrated sound systems and licensed music for commercial environments.



Business Phone Systems

In today's fast-paced world, a professional phone system is essential for smooth communication within and outside your company. At PrismRoute, we offer advanced business phone systems designed to improve your efficiency, streamline operations, and keep you connected no matter where you are.

What is a Business Phone System?

A business phone system is much more than a traditional telephone line. It includes powerful tools like:

Call Routing: Greet callers with a professional menu such as "Press 1 for Sales, 2 for Support." Automatically direct them to the right department without delays.

Call Queues: Manage high call volumes by placing callers in a queue until your team is available, ensuring no call is missed.

Ring Groups: Route incoming calls to multiple phones at once, so the first available team member can answer. Ideal for collaborative departments like customer support.





Business Phone Systems

Platforms Features

Flexible Access Across Devices

Stay connected anytime, anywhere with support for multiple platforms, including:

Web Browser: Make and receive calls directly through a web application.



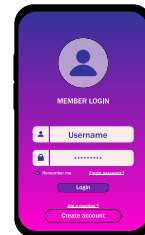
Desktop Applications: Seamless integration for Windows and MacOS.



IP Desk Phones: Enjoy the classic phone experience with advanced features.



Mobile Apps: Use your business extension on the go with apps for iOS and Android





Business Phone Systems

General Features

Work From Anywhere



Whether you're in the office, working remotely, or traveling abroad, your extension travels with you.



Use your business phone system in Europe, Asia, or anywhere with internet access.

Assign DID Numbers (Direct Inward Dialing) in different countries so customers can call local numbers while reaching your global support team.



Empower your remote workforce to stay connected and productive with full access to the phone system from home or on the move.





Business Phone Systems

Advanced Features

Hot-Desking: Share workstations with ease. Simply log in to any phone in the office, and your extension follows you.



Call Recording: Record all calls for training, quality assurance, or compliance purposes.



Call Transcripts: Automatically generate text transcriptions of recorded calls for easy reference and documentation.



Voicemail Management: Receive and manage voicemails directly from your email inbox.



Concurrent Calls: Handle multiple simultaneous calls with a single business number. Start with 10 concurrent calls and scale up as needed.





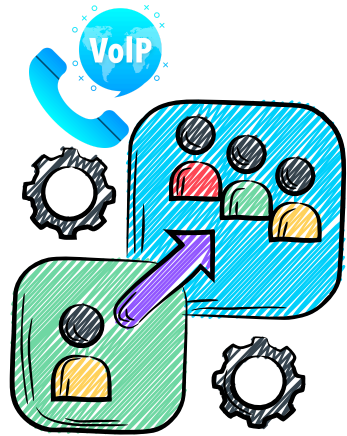
Business Phone Systems

Global Capabilities

Support Centers Anywhere: Establish a support center in another country effortlessly. Use local DID numbers to create a seamless connection for your customers, ensuring round-the-clock availability regardless of time zones.



Call Control and Scalability: Manage outbound calls with ease by displaying a single primary number while supporting up to 10 or more concurrent calls. Scale your call capacity as your business grows without disruption.



Emergency Services Compatibility: Our systems ensure reliable access to emergency services in the US and Canada (911) and the UK (999).*



** Proper address and name verification are required to comply with local regulations, ensuring your business is always prepared for critical situations.*



Network Design and Implementation

A robust, reliable network is the backbone of any business, and we specialize in creating solutions tailored to your unique needs.

- **Custom Design:** We analyze your business requirements to design a network that ensures seamless connectivity, high performance, and scalability as your business grows.
- **Secure Implementation:** Our team implements advanced security measures to protect your data and systems from unauthorized access or cyber threats.
- **Optimized Performance:** We build networks with speed and reliability in mind, ensuring minimal downtime and maximum efficiency for your operations.
- **Scalable Solutions:** Whether you're a small business or an expanding enterprise, our networks are designed to grow alongside your business needs.
- **Maintenance and Support:** We provide ongoing support to ensure your network remains up-to-date, secure, and optimized for your operations.

From local office setups to complex multi-site networks, PrismRoute ensures your business stays connected and efficient.



Network Design and Implementation

A well-designed network is essential for smooth operations, secure data transfer, and future growth. At PrismRoute, we offer tailored solutions to ensure your business stays connected and protected.

Smart Firewall Systems for Ultimate Security

Cybersecurity is a global priority, and we take it seriously. We implement smart firewall systems to monitor, detect, and block potential threats in real time.



For high-budget projects, we offer Cisco solutions, a trusted industry leader in network security and reliability. Even for smaller setups, we guarantee our systems will work effectively and provide robust protection, ensuring peace of mind for your business.

Cybersecurity You Can Trust

- With global cyberattack rates constantly rising, your data's security is our top priority.
- To date, we have a 100% incident-free record, meaning no PrismRoute-designed network has been compromised.
- From malware protection to secure remote access, we safeguard your network against unauthorized access and cyber threats.





Network Design and Implementation

Wi-Fi That Works Seamlessly

We prioritize robust and reliable Wi-Fi solutions for businesses of all sizes:



Solutions that minimize dead zones and maximize performance: ensuring smooth connections for all devices.



High-speed, secure Wi-Fi: networks optimized for your office layout and user demands.



Advanced guest and private Wi-Fi setups to balance accessibility and security for staff and visitors.



We design and implement Wi-Fi systems that ensure fast, secure, and reliable connectivity, tailored to your business needs and optimized for seamless performance.



Network Design and Implementation

Captive Portal: Your Gateway to Managed Wi-Fi Access

A **Captive Portal** is a powerful tool used to control access to public or private Wi-Fi networks.

When users connect to your Wi-Fi, they are redirected to a web page requiring them to complete specific actions before gaining full internet access.

How It Works

Redirect Users: When users connect to your network, their device is redirected to a web page instead of immediate internet access.

User Interaction: The portal may require users to:

Enter personal information (email, phone, or other details).

Agree to terms and conditions.

Complete a payment for access (if applicable).

Grant Access: Once the required actions are completed, users are granted internet access.



Network Design and Implementation

Captive Portal: Your Gateway to Managed Wi-Fi Access

Why Use a Captive Portal?

- **Monetization:** Charge users for Wi-Fi access, often useful in commercial settings like hotels, airports, or cafes.
- **Branding:** Customize the portal page with your logo, colors, and messaging to create a professional impression.
- **Security:** Ensure only authenticated users can access your network, preventing misuse or unauthorized entry.
- **Data Collection:** Gather valuable user information, such as emails or phone numbers, for marketing or analytics.
- **Usage Control:** Set time limits, bandwidth caps, or other restrictions to optimize network performance.



Applications of Captive Portals, Public Spaces, Hotels and Resorts
Educational Institutions, Corporate Networks

A Captive Portal is not just about access—it's about creating a controlled, secure, and branded experience that benefits both your business and its users.

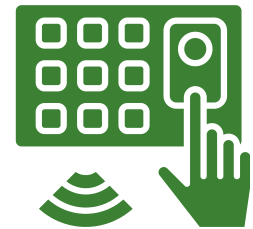


Access Control Systems

Access control systems are essential for securing physical spaces and sensitive areas within your business.

Key Features:

Customizable Access Points: Control access to different areas of your facility by assigning credentials (e.g., cards, fobs, biometrics).



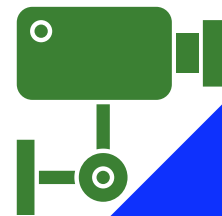
Remote Management: Monitor and manage access remotely through secure platforms, ensuring you have real-time control even from offsite.

Time-Based Access: Set access schedules for employees or visitors, ensuring doors unlock only during designated hours.



Audit Trails: Keep track of entries and exits, providing valuable data for security and compliance purposes.

Integration with Other Systems: Seamlessly integrate with other security systems, such as CCTV cameras, to enhance overall building security.





Access Control Systems

Benefits:

Enhanced Security: Prevent unauthorized access and ensure only approved individuals can enter sensitive areas.

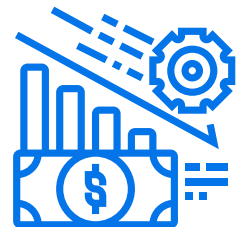


Convenience: Easily manage access without the need for physical keys or locks, offering more flexibility for your employees or guests.



Scalability: Our solutions grow with your business, allowing you to add or modify access points as needed.

Cost Efficiency: Reduce the need for traditional keys, lock replacements, and security staff, while minimizing the risk of unauthorized access and theft.



Whether you need a simple access control solution or a more sophisticated system with biometric authentication, PrismRoute ensures your business remains secure and your operations efficient.



Camera Systems and Surveillance Solutions

At PrismRoute, we provide advanced camera systems and surveillance solutions designed to keep your business safe, secure, and well-monitored. Our systems combine high-definition video capture with advanced technologies like face recognition and license plate reading to provide comprehensive monitoring and protection.

Key Features:

High-Definition Cameras: Our cameras deliver crisp, clear footage both day and night, with indoor and outdoor options for all business environments.



Network Video Recorder (NVR): We provide reliable NVR systems for local storage, ensuring video footage is securely archived and easily accessible.



Cloud Storage Option: For added convenience, we offer cloud storage services, allowing you to securely back up and access your footage remotely.





Camera Systems and Surveillance Solutions

Key Features:

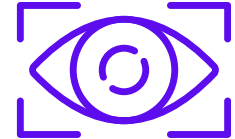
Face Recognition: Identify individuals through face recognition technology, enhancing security and monitoring.



License Plate Recognition (LPR): Capture and log vehicle license plates, ideal for monitoring parking lots and access points.



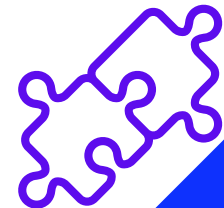
Motion Detection: Automated alerts when motion is detected, keeping you informed about unusual activities in real time.



Remote Viewing: Access live video feeds and recorded footage from any device, anytime, anywhere.



Seamless Integration: Our camera systems can be integrated with other security solutions like access control and alarm systems, creating a unified security infrastructure.





Camera Systems and Surveillance Solutions

Benefits:

Improved Security: Deter crime and monitor high-risk areas with real-time video surveillance and intelligent detection systems.

Advanced Identification: Utilize face recognition and license plate reading for enhanced security and tracking.

Remote Monitoring: Watch over your business from anywhere, ensuring you're always in control, even while traveling.

Secure Data Storage: Choose between on-site NVR storage or cloud storage for secure and accessible video archives.

Peace of Mind: With 24/7 monitoring and advanced surveillance capabilities, your business remains protected, day or night.



Microsoft 365 Services - Remote Home RDS

PrismRoute provides comprehensive Microsoft 365 services, ensuring your business operates smoothly and securely, whether from the office or remotely. We specialize in setting up and managing Microsoft 365, including remote desktop solutions, for seamless collaboration and productivity, no matter where you or your team members are located.

Key Features:

Microsoft 365 Setup and Management: We help businesses set up Microsoft 365 accounts, manage subscriptions, and ensure optimal configuration for your teams.



Remote Desktop Services (RDS): Access your office environment securely from anywhere with Remote Desktop Services, ideal for employees working from home or other remote locations. * RD-WEB



Collaboration Tools: Leverage Microsoft Teams, SharePoint, and OneDrive for secure file sharing, messaging, video conferencing, and collaborative workspaces.





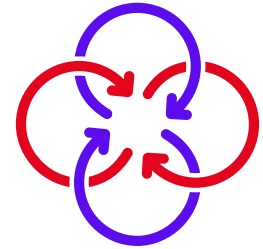
Microsoft 365 Services - Remote Home RDS

Key Features:

Secure Email and Data Management: Ensure your communications and data are protected with advanced security measures, including spam filtering, data encryption, and compliance tools.



Scalability and Flexibility: Easily scale your Microsoft 365 subscription as your business grows, adding users and services as needed without hassle.



Backup and Data Recovery: Protect your data with secure backup solutions and disaster recovery options for all critical business information.



Remote Desktop Web (RD Web) allows users to access their desktop and applications securely from any device with an internet connection, through a web browser. This convenient solution provides businesses with the flexibility to enable remote work, allowing employees to use their personal or company devices to connect to their office desktop environment. RD Web ensures a seamless and secure experience with encrypted connections, making it an ideal choice for companies seeking a cost-effective, accessible, and secure remote work solution.



Customized Servers, Assembly, and Cloud Services

PrismRoute specializes in providing custom-built servers tailored to your business's specific needs, whether for on-premises deployment or cloud-based solutions. We offer complete server assembly, ensuring that your hardware is perfectly suited for your applications. Additionally, our cloud services provide scalable, secure, and cost-effective hosting options to keep your business running smoothly, with full support for backups, security, and disaster recovery.

We offer expert consultation and design for customized servers, ensuring optimal performance for your unique business requirements. Whether on-premises or in the cloud, our solutions are built to scale with your business as it grows, providing secure and reliable hosting.



Audio-Video over IP (AV over IP) Sound Systems for Commercial Use and Licensed Music

Our Audio-Video over IP (AV over IP) solutions offer seamless integration for high-quality audio and video distribution across your business. Whether it's for a corporate event, retail environment, or conference room, we ensure that your AV needs are met with cutting-edge technology. We also handle licensed music services, ensuring your business remains compliant with copyright regulations while delivering a superior sound experience for your customers and employees.

We offer expert consultation and design for customized servers, ensuring optimal performance for your unique business requirements. Whether on-premises or in the cloud, our solutions are built to scale with your business as it grows, providing secure and reliable hosting.



Maintenance and System Protection

At PrismRoute, we believe that proactive maintenance is essential to the health and security of your network and systems. Our maintenance agreements include regular system checks, updates, and security monitoring to ensure your infrastructure runs smoothly and efficiently. We monitor your network 24/7, ensuring that potential issues are detected and addressed before they impact your business operations. Our team of experts is always on hand to provide support and ensure that all systems remain up-to-date and protected against emerging threats.

Comprehensive system protection is a priority for us. By continuously monitoring your IT environment, we can anticipate and mitigate risks, keeping your business safe from cyberattacks and downtime. Our maintenance service ensures that all aspects of your network, from hardware to software, are secure, optimized, and running efficiently. With PrismRoute, you get peace of mind knowing that your systems are always protected and supported, allowing you to focus on growing your business without worrying about technical issues.



CERTIFICATES



Nicholas Paras
3CX Tech Trainer

Awarded on:
October 26th, 2024
Certification ID: JwAYAGeWdY



Nicholas Paras
3CX Tech Trainer

Awarded on:
September 16th, 2024
Certification ID: CZbUo8Nzj4



@prism_route



Thank You for Choosing PrismRoute

At PrismRoute, we are committed to offering you cutting-edge solutions tailored to your business needs. Our team of experts is always ready to assist, ensuring that your systems, security, and services are optimized for growth and success. As a local business, we value the relationships we build with our clients, providing personalized support and guidance every step of the way. Your satisfaction is our priority, and we work hard to ensure that your business runs seamlessly, securely, and efficiently.

We appreciate the opportunity to work with you and help your business thrive. Contact us today to learn more about our services, discuss your needs, or get started with your tailored solution. We look forward to building a successful partnership together.

Contact Information:

Phone: +1 844 6000 548

Email: crm@prismroute.com

Website: www.prismroute.com

Address: 610 Market st Kirkland WA 98033

Let's Make Your Business Better, Together.



@prism_route